

# Welcome to Devon Hills Holiday Park

You've arrived! Now it's time to relax and enjoy all that our park has to offer. We do hope that you enjoy your holiday with us and find time during your stay to explore the park and its surrounding coast and countryside.

This guide tells you all that you need to know to get the most from your holiday plus a few DOs and DON'Ts that will ensure your stay is as comfortable as possible.

If you require any further assistance please do not hesitate to ask us.

Enjoy your holiday!



**If you haven't already  
checked in online, go to**

[checkin.haulfrynholidays.co.uk](https://checkin.haulfrynholidays.co.uk)



**or scan the QR code below.**



*Please enjoy your stay!*

# Did you know you can buy your own Devon Hills Holiday Home?

Pop up to the main reception and ask the Owners team for more details. We work with a no pressure sales environment, our job is to give you all the information and explain your running costs and income throughout the year.

All of our homes are privately owned. We have a Sublet Scheme to gain income and contribute to running costs.

## Subletting

### It pays to share when you're not there...

Earn from your holiday home with our 5 Star Subletting Scheme. Book the days you would like to use your home and we'll do the rest!

For more information please call our Ownership Team on 01803 666 930 or email [info@devon-hills.co.uk](mailto:info@devon-hills.co.uk)



## Buy into the Devon Hills holiday lifestyle and have your holiday on us!

We are so confident that you are going to love your holiday experience with us, that if you purchase a holiday home we will pay back the cost of your holiday.

Terms & conditions apply

# Useful Telephone Numbers

In the event of emergency vehicles being called please inform us immediately on: 07841 568 429. This number is only to be used in case of extreme emergency.

<b>Doctors</b>	Corner Place Surgery	01803 557458
	Mayfield Medical Centre	01803 558257
	Mayfield-emergencies/out of hours	0845 6710270
	NHS Direct	0845 4647

<b>Dentists</b>	Dental Emergency Service	01803 217777
	Out of office hours/weekends	01392 823682
	Alternatively contact NHS Direct	0845 4647

<b>Hospitals</b>	Paignton Minor Injuries Unit	01803 547171
	Torbay Hospital	01803 614567
	Torbay A&E	01803 654003

<b>Vets</b>	Seymour Veterinary Practice	01803 866283
-------------	-----------------------------	--------------

<b>Police</b>	Community Police	08452 777444
---------------	------------------	--------------

<b>Tourist Information</b>	English Riviera Information Centre	0844 4742233
	Totnes	01803 863168
	Dartmouth	01803 834224

<b>Taxis</b>	Torbay Taxis	01803 211611
	Torbay Cab Company	01803 292292

<b>Bus and Rail Information</b>	Stagecoach Buses Paignton	01803 664500
	Exeter	01392 427711
	Rail Times	08457 484950
	Traveline	0871 2002233

<b>Cinema</b>	Vue Cinema –	
	Paignton <a href="http://www.myvue.com">www.myvue.com</a>	08712 240 240

# Reception Opening Hours

Our friendly and knowledgeable team are here to help so please don't hesitate to come in and see us. If you have any concerns with your accommodation please let us know straight away – your holiday enjoyment is our prime concern.

## Reception Opening Hours:

Daily 9am – 5pm

**Telephone: 01803 666930**

### **Out of hours assistance:**

**For EXTREME EMERGENCIES after 5pm a Duty Manager can be contacted by calling 07841 568429.**

Reception re-opens at 9am for general enquiries and assistance.

A large range of leaflets and information booklets are on display and our reception team will be happy to help you plan your days out. In addition, we have been able to negotiate some special discounts for Devon Hills customers at a number of the top attractions in the area so please call in and collect any vouchers we have available.

Should you wish to leave feedback on your stay with us, please fill in the freepost questionnaire in your welcome pack.

# Arrival

Ahead of your arrival, please download and register the 'JustIN Mobile' app from your app store on your smart phone. Approximately two hours before your check in time, your holiday home key will be automatically sent to you via the downloaded app. On arrival, please follow the below instructions to gain access to your holiday home.

## How to use your digital door lock

### To unlock:

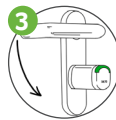
Ensure you have downloaded and opened the **JustIN Mobile** app



1 Activate the key by pressing the big green button and hold your phone against the lock knob until it lights green



2 Turn the knob one rotation, as you would with a key



3 Use the handle to open the door

Use the thumb turn to lock and unlock it from the inside

### To lock:



1 Close the door and raise the handle fully as you usually would



2 Open the **JustIN Mobile** app and press the big green key button



3 Hold your phone against the lock knob. When the green light shows, turn the knob until it stops, as you would with a key

If you are not able to download or use the **JustIN Mobile** app, please visit main reception.

## Accommodation


Your accommodation is situated in a picturesque setting and provides a unique and relaxing holiday environment. It is superbly equipped and beautifully styled so what could be more enjoyable than watching the sun set over the trees from your private balcony.

Our maintenance and housekeeping teams have fully checked the lodge prior to your arrival so we are confident that you will have a trouble-free stay. However if you do find something amiss, or if something goes wrong during your stay, please advise us as soon as possible.

All our accommodation is NON SMOKING.

## Activities On Park


Brand New Activities  
at Devon Hills



From 20th July

**PERSONAL TRAINING**  
**FITNESS CLASSES**  
**YOGA**  
**NATURE TRAILS**  
*(and more)*

PLUS partnerships with National Trust, Vue Cinemas,  
British Mountaineering Council and many more



Contact us on 01803 666 960  
or email us at [info@devon-hills.co.uk](mailto:info@devon-hills.co.uk)  
to find out more.

## Barbecues

You are welcome to bring your own BBQ or use a disposable BBQ on your decking area. We request that disposable BBQs are not placed directly on the decking as this will result in damage.

## Boiler

Your boiler operates your hot water system and, unless your lodge has electric heaters, will also power your heating system which is either radiators or under floor heating. If you have any problems with either your heating or your hot water, please contact reception and a member of our maintenance team will have a look for you.

## Child Safety

Please do not encourage children to play on the roads; the roads are in constant use. Please ensure that you know where your children are at all times. In the event of a lost or missing child please contact the emergency phone on 07841 568429, or the reception on 01803 666930. You will need to provide us with as much information as possible including where the child was last seen and a description of the child and their clothing; we will then send a team out to search for your child.

## Children's Play Area

There is a playground located by the Blagdon Inn and The Health and Leisure Club. There is also a grass play area by the Club for all ball games (we kindly ask that children do not play ball games on any other part of the park).

## Departure Time

We would request that you DEPART your lodge by 9am on the last day of your stay.

## Dishwasher

Before placing the dishes in the dishwasher, please remove the larger food particles to prevent the filter becoming blocked.

## Fire Safety

Please familiarise yourself with the exit route from your lodge. All necessary fire and safety precautions must be taken when using portable barbecues. All lodges have smoke detectors. We check the batteries regularly however, if you do need a replacement battery during your stay, please contact reception.

## In Case of Fire

Only attempt to put the fire out if there is no danger to you. Call 999 and ask for the fire service. Give your lodge number and our address, Devon Hills Holiday Park, Totnes Road, Paignton, Devon TQ4 7PW.

All our public areas are fitted with fire alarms. If the alarm sounds, please evacuate the building following the instruction of our team members who are fully trained for this eventuality.

## Hot Tub

We trust that you will enjoy your hot tub. We are certain that this will be one of your special holiday memories. Our maintenance team have cleaned and checked your hot tub prior to your arrival. A member of the team will check the hot tub at regular intervals during your stay. We would kindly request that you do not enter the accommodation with wet feet.

The hot tubs are set on a heater/filtration timing system which runs daily between 8am and 10.30pm.

**Please do not adjust the programme button, please ask maintenance to do this for you.**

In case of emergency while using your hot tub the main isolator switch is located on the decking. This large red switch will immediately stop the hot tub.

- To turn the hot tub on press the high power jet button
- To turn the light on press the light button on the keypad
- To add more air bubbles twist the tap to open; close the tap to reduce the bubbles. (On some tubs only)
- To increase the temperature press the up arrow on the key pad until the required temperature is reached. Water temperature will increase at approximately 2 degrees per hour if the hi jets are off and tub lid is closed
- To decrease the temperature press the down arrow. Water temperature will decrease slowly according to the ambient air temperature.

**Please DO NOT add bubble bath, or use soap or shampoo whilst in your hot tub.**



## Hot Tub Health & Safety

We take your health and safety extremely seriously and while we want you to enjoy your hot tub we also want it to be a safe and enjoyable experience.

### **Please familiarise yourself with the following information:**

- Keep the cover on the hot tub when you are not using it.
- Shower before and after use.
- Maximum bathe time 15 minutes.
- Only use your hot tub between 0830 - 2230.
- Excessive use may lead to skin irritation/heat rash/dizziness.
- Cool off & shower before re-entering.
- Never use the hot tub whilst under the influence of alcohol.
- Never use the hot tub during a thunder storm or when lightning is forecast.
- Always tie back long hair – this will stop it getting sucked into filters.
- We strongly recommend children under the age of 8 do not use the hot tub.
- No diving into or ducking under the water.
- Children under the age of 14 must be supervised at all times.
- We strongly advise you not to use the hot tub if you are pregnant.
- We use chlorine and bromine in our hot tubs – if you are allergic to either of these chemicals please do not use the hot tub.
- The jets will supply bubbles - Never add any detergents or chemicals to the hot tub. You could damage the hot tub or cause a chemical reaction which could damage you!
- We suggest you remove all jewellery before using your hot tub.

We take the care and cleanliness of your hot tub extremely seriously and we respectfully request that you do the same. This will ensure your enjoyment throughout your stay.

## **Launderette**

Used at your own risk as no refunds available at this time due to not handling money by team members. 60-65% of units have washing machines inside. Please check facilities for your holiday on Hoseason's booking information.

## **Oven & Grill**

### **The Oven** (electric)

The oven is heated by two elements, one at the top of the oven and the other underneath the floor of the oven.

To heat the oven, turn the selector switch to the required function. The control panel illumination and oven light will remain on. Then turn the oven temperature control to the required temperature. The oven indicator light will immediately come on and will remain on until the oven reaches the set temperature. This light will then automatically go on and off during cooking as the oven thermostat maintains the correct temperature.

Food should not be placed on the floor of the oven.

For gas ovens, turn the oven selector to the desired position and depress either the knob or the igniter button to light the gas. Hold the knob for five seconds before releasing.

### **The Grill** (electric)

Select cooking method by turning control knob to select the required grill setting. The interior light will come on and the grill is ready to use.

For grilling and toasting use full width grill setting, half grill is suitable for small quantities of food as only the inner part of the grill will heat up. Once you have chosen the required setting, the indicator will light and remain on until the required internal temperature is reached. The indicator will go on and off throughout cooking although the grill remains on. To turn the grill off turn selector switch to position 0.

For gas grills, follow the procedure for gas ovens using the grill selector.

## Parking

Each holiday home has a parking bay for one vehicle only. If you have additional vehicles please park them in one of the public parking areas. Please do not park on the grass or try to squeeze a second vehicle onto your parking place – we will ask you to move it.

Electric Vehicles parked alongside your accommodation should not be charged from the accommodation power supply. Please charge your vehicles at an appropriate EV charging point either on park or in the local area. Thank you.

## Park

Whilst the area is widely regarded as one of outstanding natural beauty we would remind guests that extreme care should be taken when walking. You should always keep to the established footpaths. Small children should be supervised at all times.

## Pets

There are dog walking areas on park situated next to Orchard Park and Moonshadow Rise. If you look on your map you will see this outlined.

In order to ensure the enjoyment of everyone we would ask that you adhere to the following:

### **Keep your dog on a lead**

You must keep your dog on a lead at all times when walking through the park. This applies to all dogs irrespective of how well trained they are! Well trained and obedient dogs can be let off the lead on in the designated areas.

### **Do not allow your dog to foul indiscriminately**

Please ensure you always pick up any deposits left by your dog and place in the appropriate bins.

### **Dogs are not permitted in the following areas:**

- In the leisure reception area
- In any of the holiday lodges on hire unless a designated pet unit

## **Do not allow your dog to be a nuisance**

We would ask that dogs do not sit on the furniture or the beds. Dogs should only be left alone in the accommodation if you are sure that they will not bark to the point of annoying other customers or cause any damage to the lodge.

## **Television**

All our televisions are linked to Freeview so you have a full choice of channels available. Remote controls are provided for both TVs and DVD players.

## **Valuables**

Please lock your holiday homes and secure all windows, valuables should be stored out of sight.

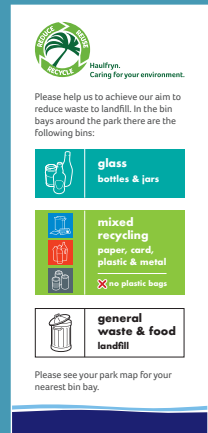
# Waste & Recycling Information

## Waste Collection

Our waste bins are located in wooden bin bays throughout the park. We would ask that rubbish bags are placed directly into the lidded bins and any items that are recyclable can be placed in the separate bins provided.

## Recycling

As part of our commitment to the environment and our desire to preserve the beauty of this part of the country we are committed to reducing waste and recycling as much of our rubbish as possible. If you would like to join us we have the following recycling available:



We recycle	Description	Location of recycling point
<b>Glass Bottles</b>	All types and colours of glass	In bin bays around the park.
<b>Cardboard</b>	All thickness of cardboard / boxes	In bin bays around the park.
<b>Paper</b>	Newspaper and magazines, all other types of paper.	In bin bays around the park.
<b>Tins</b>	Any tins or cans---please rinse	In bin bays around the park.
<b>Plastic Containers</b>	Any plastic bottles--- please rinse	In bin bays around the park.
<b>Plastic Bags</b>	Carrier bags	In bin bays around the park.

PLEASE help us to recycle and ensure that items are placed in the correct collection point. If we contaminate our recycling waste by putting incorrect items into the bins it is refused and the whole load is then taken to a landfill site!



## Security Deposit

Your security deposit is taken through the booking system and will be returned to you 10 days after departure. We will ring fence just £1 to help you manage your money. By doing this your bank has pre-authorised Haulfryn to debit your account £100.00 should we see fit. Rest assured no monies were taken at check-in although it may affect your account balance; this is our security deposit.

Within 24hrs of check-out, this holiday home shall be checked by a member of Haulfryn staff; if you leave the holiday home in the condition you found it then Haulfryn shall not claim the security deposit. If there are any damages, breakages or missing items above the normal wear & tear of a holiday maker, then Haulfryn shall claim the £100.00 security deposit you have authorised. Should Haulfryn feel it necessary to claim the security deposit post check-out, you shall be notified as soon as possible as to the reason.

## Terms and Conditions

1. Your accommodation will be in a clean, tidy and well-presented manner for your arrival. If you believe this is not the case, please notify a member of the team on the day of arrival so we can rectify any issues or make a note of anything that you have brought to our attention. Written confirmation of any issues raised should be obtained from the team member it was reported to.
2. Any issues that were not highlighted to a member of park staff on the day of arrival after check-in will be included in the post departure assessment of the holiday home & may result in a claim against the holiday makers security deposit.
3. At check in, a security deposit of £100 (one hundred British pounds) will be required. This will be taken by pre-authorising your credit or debit card upon arrival at the park. You shall be responsible for all damages or breakages caused by you and/or members of your party to the property or its contents (including the cost of any work needed to rectify any issues, damage or breakages). Reasons for monies being taken from your account are not exclusive to but could include:
  - 3.1. Contents of the property are found to be missing, broken or have been damaged beyond the normal wear and tear;
  - 3.2. Damage has been caused to the property itself;
  - 3.3. Cleaning charges in excess of the normal level of cleaning;
  - 3.4. Smoking has occurred inside the property;
  - 3.5. Animals have been inside a non-pet friendly holiday home;
  - 3.6. Any outstanding monies on your account, including late check out fees;
  - 3.7. One or more lost Digital Locks for your Holiday Home;
4. For any claims against your security deposit;
  - 4.1. Haulfryn shall obtain a quote for the damage repair or replacement, after which you shall be notified of the full amount due.

- 4.1. If the full value of damage repair or replacement does not total the full value of the security deposit you shall be contacted by Haulfryn and have seventy two (72) hours to settle the sum due, after which, if the balance has not been settled, Haulfryn will claim the full security deposit.
  - 4.2. If the full value of damage repair or replacement totals more than the full value of the security deposit, you will be contacted for any additional payment.
5. If a holiday home requires numerous smaller repairs, Haulfryn may keep the full value of the security deposit.
6. Monies could also be held by Haulfryn Group Limited as a result of a breach by you and/or members of your party of any of the following rules in connection with a Hot Tub on Park:
  - 6.1. Keep the cover on the hot tub when you are not using it. Shower before and after use. Maximum bathe time 15 minutes. Only use your hot tub between 0830 – 2230.
  - 6.2. Never use the hot tub whilst under the influence of alcohol. Never use the hot tub during a thunder storm or when lightning is forecast.
  - 6.3. If any of the above are found to be true, Haulfryn Group Ltd will retain your Security deposit as appropriate at their sole discretion.
7. Haulfryn will attempt to notify all holiday makers within 72 (seventy-two) hours of finding any damaged or missing items if Haulfryn feel there is reason to make any claims against a security deposit.
8. You are not permitted to charge your electric vehicle (EV) from the power supply within your accommodation. EVs should only be charged at professionally installed charging points either on the park or in the local area. Haulfryn will seek to recover from you recompense to cover any damages caused through a breach of this policy.
9. A 20% maintenance charge will be applied to any product, works or service carried out by Haulfryn or a third party.
10. The pre-authorized amount is set aside by your card issuer for period of at least 10 (ten) days from the date of pre-authorization. The pre-authorization will affect your available funds, balance or spending limit. For more information please contact your card issuer.
11. Once a pre-authorization has been made, Haulfryn Group Ltd cannot release, remove or lower the pre-authorized amount. This is a restriction imposed by the card issuer, and cannot be negotiated.
12. No card details are stored by Haulfryn.



# Food & Drink

## The Blagdon Inn 01803 521412

Indoor and outdoor table service is available along with takeaway and delivery options, with reduced capacity to maintain social distancing and rigorous sanitisation and monitoring regimes in place. Opening times: 12-3.30pm & 5.30-9pm every day.

## Takeaway Service

For our takeaway or delivery service to your holiday home please visit [haulfryn.co.uk/takeaway](http://haulfryn.co.uk/takeaway)

## On Site Shop

Our on site shop is located at Reception, open daily between 9am-5pm. Here you will find all your everyday essentials plus much more.



**Online Food Ordering  
Now Available at Praa Sands**

To order delicious food for collection or for delivery straight to your holiday home just **scan the QR code below** and follow the on-screen instructions.

Available 12-3.30pm & 5.30-9pm

When ordering for delivery, please use **TR20 9SH** as the postcode and follow the instructions at the checkout stage to give your location on the park.

To order scan the QR code above.

ADD TO ORDER

Google Pay | Apple Pay

# Park Activities

## The Health and Leisure Club

**01803 666935**

Keep fit while you are on holiday! Why not make use of our state of the art gym. Even if you have used a gym before, you will require an induction, or if you would like one of our advisors to work out a fitness programme for you, there is a small charge of £5 applicable in both instances. Under 16s must be accompanied by an adult.

The gym has a large cardio area, a resistance area and a free weights room.

All gym sessions and classes must be booked in advance online to maintain social distancing.

Please call 01803 666935 for any booking enquiries.

<b>Gym Opening Hours</b>	<b>Weekdays</b>	<b>6.30am – 9pm</b>
	<b>Weekends</b>	<b>8.00am – 6.30pm</b>

## Hair Salon

We have a hair salon in Leisure that will take care of all your needs, from cuts to styling!

**For more information or to book an appointment, call Leisure on 01803 666935.**

## Swimming

Our pool is open with reduced capacity. All pool sessions must be booked in advance online to maintain social distancing.

Please click [here](#) to view our pool timetable and to book a slot.

## Children's Play Areas

There is a playground located by the Blagdon Inn and The Health and Leisure Club. There is also a grass play area by the Club for all ball games (we kindly ask that children do not play ball games on any other part of the park).

## Tennis

There is a hard tennis court which is free for holiday makers.

Racquets are available to hire (from The Health & Leisure Club Reception) for a cost of £5 for two racquets and balls. Lost or damaged equipment incurs a charge of £1 per ball and £5 per racquet.

## **Off Park Activities**

We have a great range of activities which can be organised at an additional charge: outside Yoga, Personal Training, Natural Trails and many more. Please ask at reception for more details.

## **Walking**

Devon offers many walks through the countryside and along the coast, all with spectacular views. Please contact reception who will be able to suggest some fabulous walks.

## Beaches

If relaxing on the sand, building sandcastles and playing in the sea are a highlight of your holiday, then you have come to the right place. Torbay has 20 beaches set alongside 22 miles of magnificent coastal scenery. All the beaches are designated as safe for bathing but please take care when using dinghies etc. and pay attention to the warning flags. Please also note that most beaches have a total ban on all dogs between May 1st and September 30th. For safety's sake, please check tide times and note that some beaches have no lifeguards.

## Paignton

### Hollicombe Beach

Lovely, quiet, sandy beach with shallow water and amenities close by.

### Preston Sands

A very popular, long sandy beach, which can get fairly busy during the summer. Preston offers a café, beach shop, toilets, deckchair /sunbed/beach hut hire and limited parking.

### Paignton Beach

Long sandy beach with easy access, large green adjacent and ample parking located close by. Plenty of amenities are available including amusements and a café on the pier, located close to the town centre.

### Goodrington Sands

Paignton's busiest beach during the summer months. Great facilities including cafés, beach shops & toilets. Dogs are allowed on the north sands only. An excellent beach for low tide rock pooling.

### Broadsands Beach

Long sandy beach which gets busy during the summer months. Facilities include café, beach shop, toilets and first aid post. Deckchair/sunbed/beach hut/pedalo and boat hire available.

### Elberry Cove

A pretty shingle beach with access by footpath from Broadsands car park. Dogs are allowed and it is particularly well known for the lovely woodland walks close by.

# Brixham

## Churston Cove

Small sand and shingle beach found on the outskirts of Brixham. Dogs are allowed.

## Fishcombe Cove

Quiet, sandy and shingle beach. Has some facilities, including toilets, café and some parking, dogs are allowed.

## Breakwater Beach

Large pebble and shingle beach with little or no facilities. Very popular beach for divers.

## Shoalstone Beach

Shingle and rock pool beach with sea water swimming pool, dogs allowed.

## St Marys Bay

A well kept local secret, quiet shingle and sand beach. No amenities but offers a great detour from a coastal walk, with beautiful views from Sharkham Point right across the bay.

## Torquay

Torre Abbey Sands/Corbyn Sands

Torquay's biggest and busiest beach, ideal for young children, with great facilities. Ample car parking and tuition for windsurfing available. Just across the road from Torre Abbey parklands, a great place for a picnic.

## Maidencombe Beach/Watcombe Beach

Sand and shingle beaches with amenities, dogs allowed but the parking is limited.

## Babbacombe Beach

A sand and shingle beach ideal for sailing and fishing off the breakwater, very steep access and limited parking.

## Chemist

### **Boots Pharmacy**

**01803 559180**

14 Victoria Street, Paignton, Devon TQ4 5DN

### **Lloyds Pharmacy**

**01803 559446**

11 Palace Avenue, Paignton, Devon TQ3 3EF

## Churches

### **Collaton St Mary Church,**

**01803 66569**

Blagdon Road, Paignton, Torbay TQ3 3YA

### **Paignton Parish Church,**

**01803 551866**

Church Street, Paignton, Devon TQ3 3AQ

### **Foxhole Grace Baptist Church,**

**01803 527542**

10 Greenlands Avenue, Paignton, TQ3 3JZ

## Family Attractions

We have a wide selection of tourist information leaflets in reception to help you plan your time. Some places you may like to try are:

### **Crealy Adventure Park, Nr Exeter. Tel: 01395 233200**

Excellent family day out suitable for all ages. Two indoor play areas with death slides, ball pits and an adventure zone, (there is one specifically for tiny children) log flume and roller coaster.

### **Woodlands Adventure Park, Dartmouth. Tel: 01803 712598**

60 acres of action and indoor fun, huge water slides, rock'n'roll tug boat, toboggan run and woodland adventure trail and farm animals.

### **Pennywell Farm, Nr Buckfastleigh. Tel: 01364 642023**

Tamer farm park more suitable for younger children. Feed the lambs, milk a goat, collect the eggs or stroke a pet. Train ride, trampolines, toboggan run and play areas.

### **Paignton Zoo, Paignton. Tel: 01803 697504**

75 acres of natural habitat containing a large selection of the world's threatened species.

### **Living Coasts, Torquay. Tel: 01803 697500**

An all weather attraction, where there's plenty to see and do: mingle with the playful penguins, get up close to the otters, octopus and seals, and much more.

### **National Marine Aquarium, Plymouth. Tel: 01752 220084**

Europe's deepest and Britain's largest aquarium with stunning displays. Get up close to a shark, stroke a starfish or meet Nemo and all his friends.

### **Dartmoor Miniature Pony Centre, Nr Moretonhampstead.**

**Tel: 01647 432400**

Friendly centre with lots to do for younger children. Meet and pat over 150 animals including miniature ponies and donkeys. Ball pit and soft play area.

## **Petrol Stations**

Petrol Stations – Can be found at both Sainsbury's and Morrisons. Directions as below.

## **Supermarkets**

### **Morrisons (next to Paignton Zoo)**

Head towards Paignton, go straight over the traffic lights and follow the signs for Paignton Zoo. The supermarket is next door.

### **Sainsbury's**

Head towards Paignton, go right at the traffic lights and keep going through first set of lights, turn right at the next set of traffic lights in to the Sainsbury's car park, past McDonald's.

### **Asda**

Head towards Paignton, go right at the traffic lights and as you get to the top of the hill you will see it on your right hand side, it is opposite KFC.



# Can't wait to come back!

## Save 10% off your next holiday

Devon Hills is the perfect place in both winter and summer. Book your next holiday before you leave and get 10% off the brochure price of your chosen lodge type.

Call into reception to arrange your next stay with us whatever the time of year.

## We look forward to welcoming you back again soon.

If you enjoyed your stay please spread the word - just search Devon Hills Holiday Park, on TripAdvisor to leave us a review.

If something about your stay was less than satisfactory, please email **info@devon-hills.co.uk** which will go directly to the Park Manager.

Why not visit another of our parks for your next break? See all our options throughout the UK at **[www.haulfrynholidays.co.uk/our-parks](http://www.haulfrynholidays.co.uk/our-parks)**

On behalf of all of The Devon Hills Team have a pleasant journey home and we look forward to seeing you again very soon.